

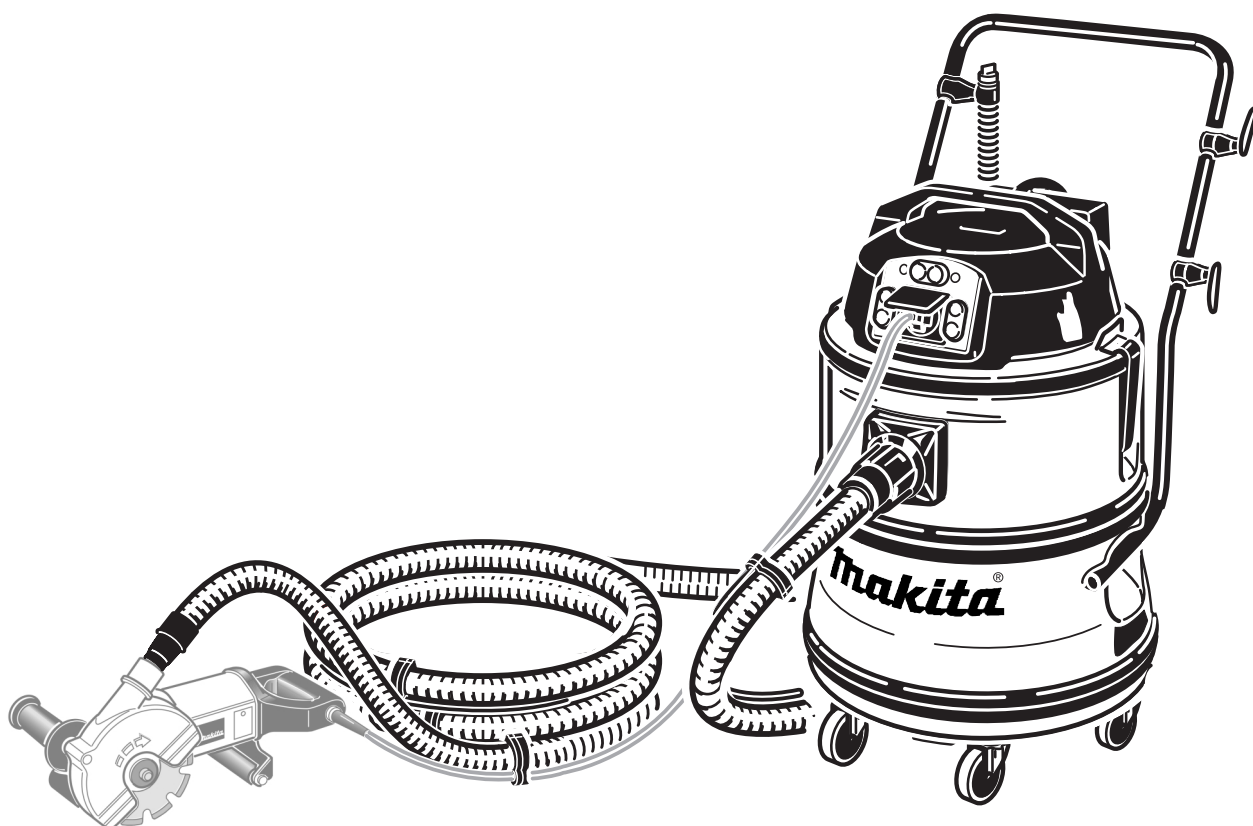
Makita[®]

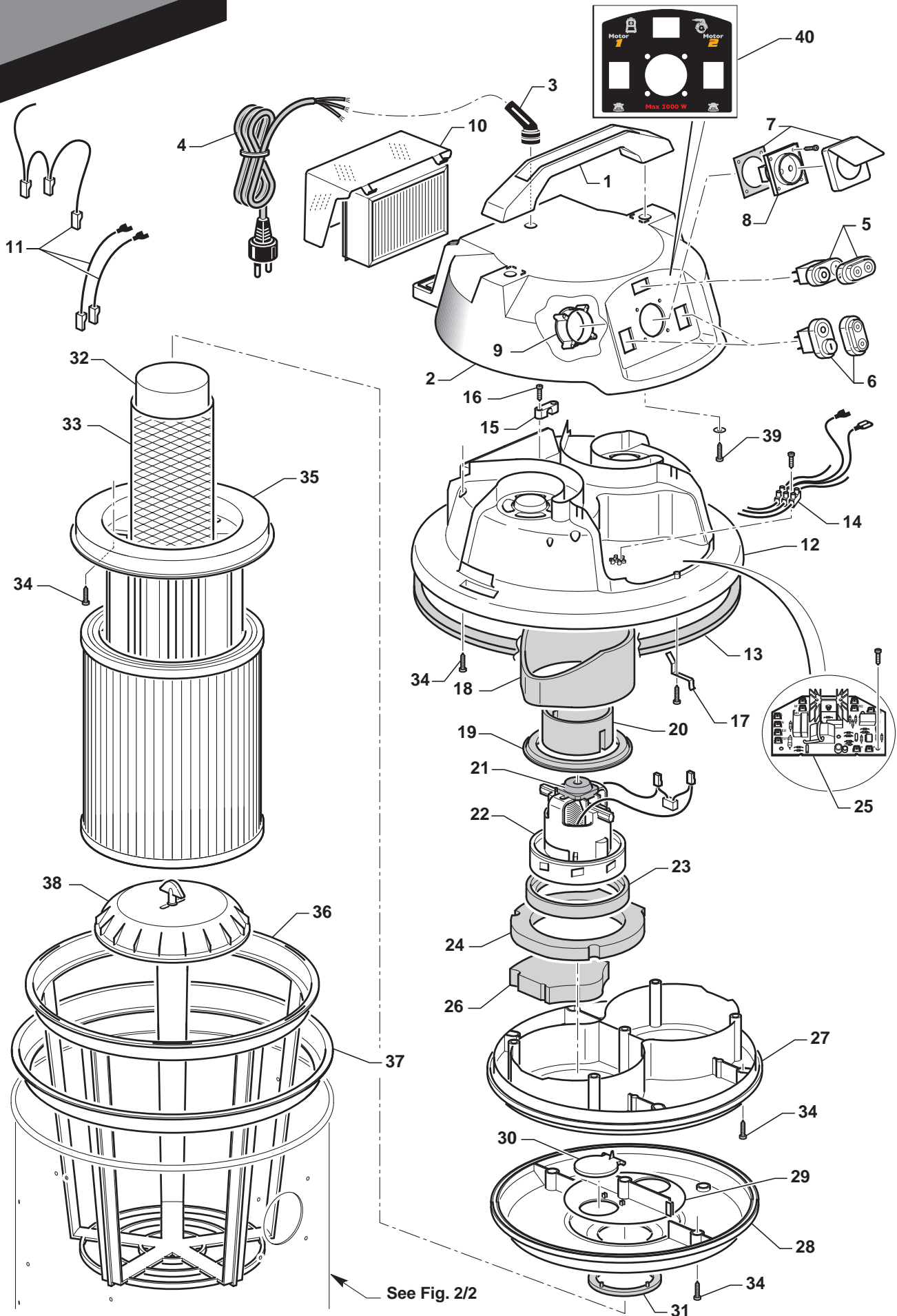
SPARE PARTS

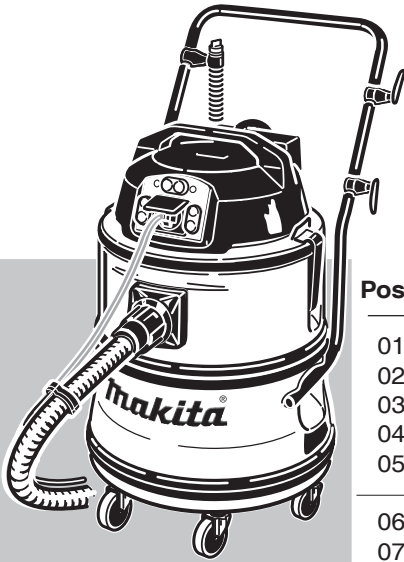
Ed. 11/2007

Model 449

Cod. 94 600H7B







Model 449

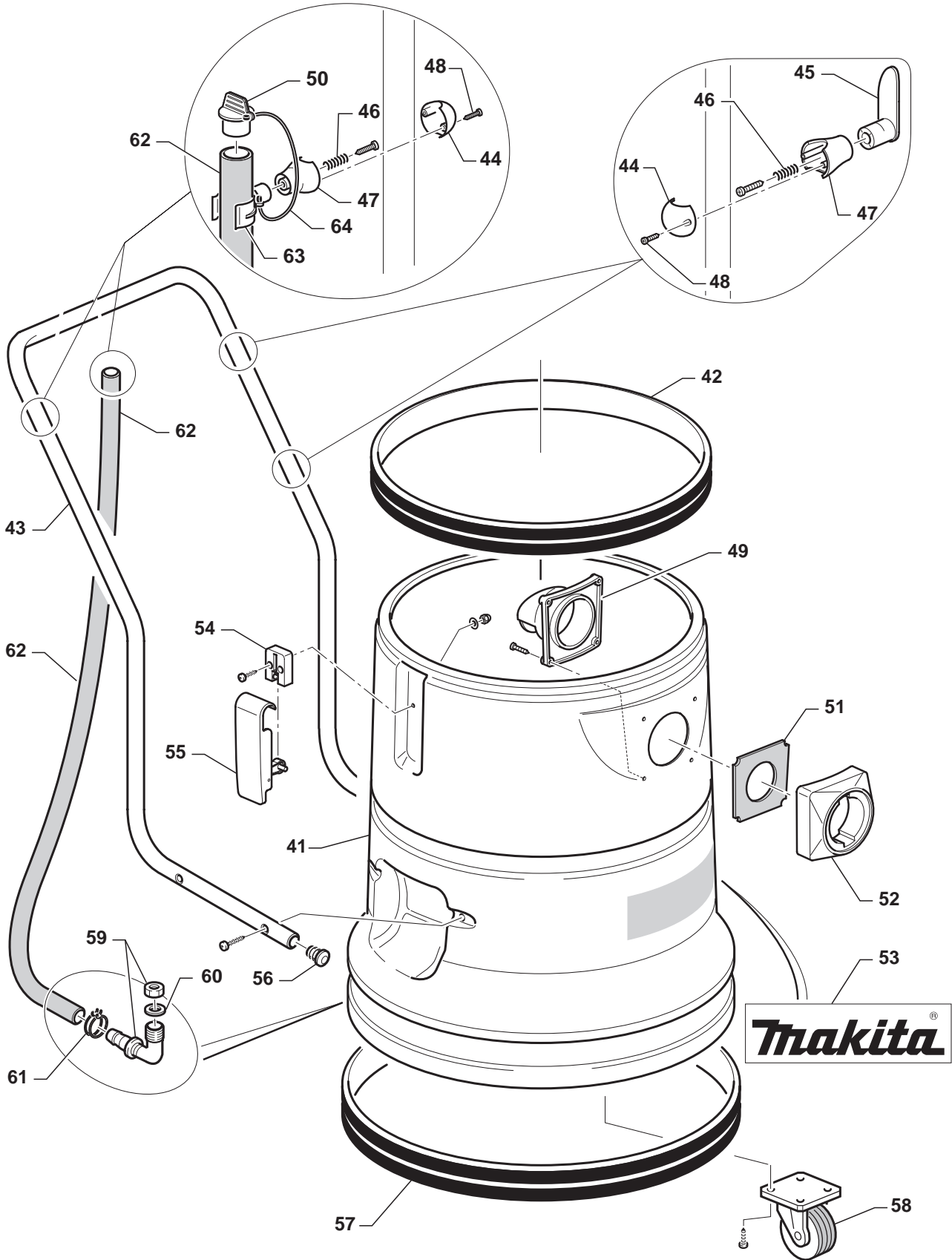
Makita[®]

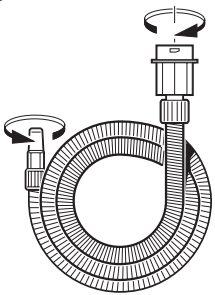
1/2

Pos.	Description	Code	Price € (Each)
01	Handle	50003H0N	
02	Cover	50009H0N	
03	Cable guide	70004H0N	
04	Feeder	80017B0N	
05	TTR Switch	80101H0V	
06	TTR bipolar switch	80100H0V	
07	Outer shell + cover	80202B8N	
08	Schuko socket	80200B8N	
09	Socket lock nut	50315BDV	
10	Hepa post-filter lid	50007H0N	
11	Set of wires	80152H0V	
12	Motor cover	50006H0N	
13	Drawn wire mm 10x5	70007H0N	
14	Tripolar terminal	80029B0I	
15	Cable fastener	50333BEN	
16	Screw 3,5x20 mm type Poly lok	25806H0X	
17	Electrostatic current lamella	30078H0X	
18	Exterior isolator ring to motor diaphragm	83350H0N	
19	Diaphragm seal	70001H0N	
20	Flow separator	70000H0N	
21	Motor absorber	70005H0N	
22	W/cup single-stage motor	20100H0X	
23	Motor gasket	70002H0N	
24	Moulded ring	83351H0N	
25	Electronic card	80208H0X	
26	Rear motor support's shaped soundproofing	83352H0N	
27	Motor support	50000H0N	
28	Conveyor plate	50002H0N	
29	Valve body	50005H0N	
30	Valve flap	50001H0N	
31	Float gasket	70003H0N	
32	Float	50014H0N	
33	Float protection grid	30100H0X	
34	Screw 4x30 mm type Poly lok	25804H0X	
35	Cartridge holder basket	50008H0N	
36	Pre-filter housing	50023H0N	
37	Pre-filter flange	50024H0N	
38	Complete adapter disk	01410H0N	
39	Screw 4,5x40 mm type Poly lok	25805H0X	
40	Twin Power Tools cover adhesive	85003H0V	

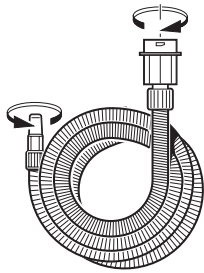
> > >

2/2





A1



A2



A3



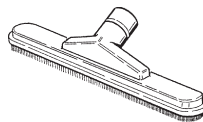
A4



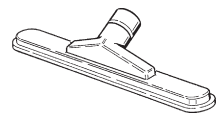
A5



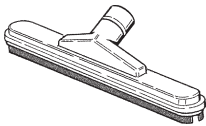
A6



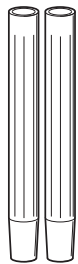
A7



A8



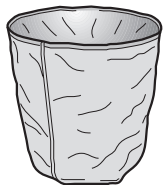
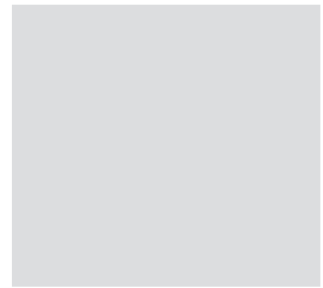
A9



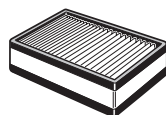
A10



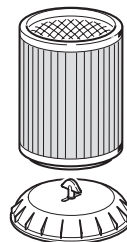
A11



A12



A13

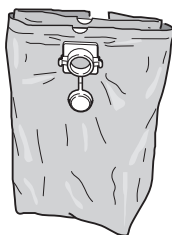


*
A14

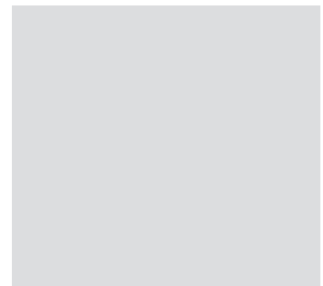
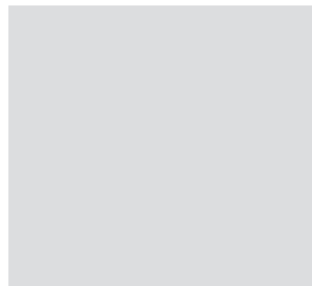


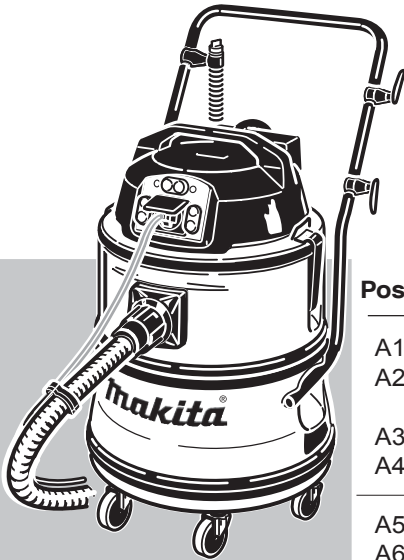
A15

Optional



*
A16





Model 449

Makita[®]

Accessories
ø 45 mm

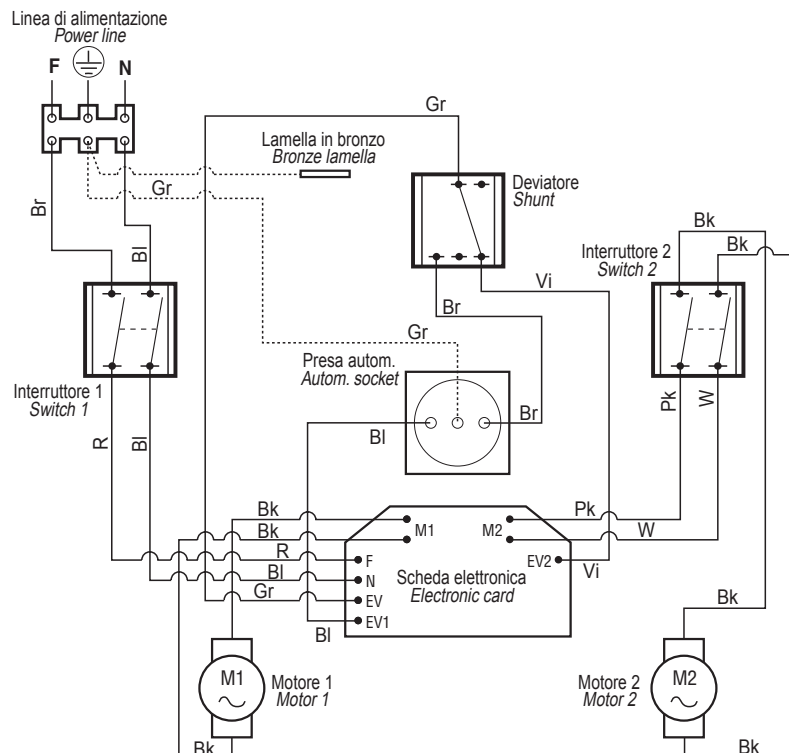
Pos.	Description	Code	Price € (Each)
A1	Flexible hose with swivelling connectors	01300H0N	
A2	ø25 mm flexible hose for electric portable tools with universal adapter - 5 mt	01305H0N	
A3	Upper curved tube in chromium plated steel	40020B5N	
A4	Lower curved tube in chromium plated steel	40021B5N	
A5	Triangular nozzle	50090B0N	
A6	Crevice tool	50087B0N	
A7	Industrial floor brush	60005B5N	
A8	Industrial carpet brush	60006B5N	
A9	Industrial brush for liquids	60007B5N	
A10	Rigid extension ø 45	50091B0N	
A11	Cable clamp for electric tool	50318BHN	
A12	Canister pre-filter made of polyester	83010H0I	
A13	"Hepa" outlet air post-filter	83150H0I	
A14	Pack. of cartridge filter element + adapter disc	83140H0G	
A15	Sponge filter to vacuum liquids	83035H0B	
OPTIONAL			
A16	Pack of 5 disposable collecting bags	83139H0B	

Electrical diagram

**Legenda colore cavi
Cable colour coding**

W	Bianco / White
Bk	Nero / Black
R	Rosso / Red
Br	Marrone / Brown
Bl	Blu / Blue
Gr	Verde / Green
Y	Giallo / Yellow
Pk	Rosa / Pink
Vi	Viola / Violet

* - con faston - with faston



Makita[®]